

QUIETSCHIE-GUIDE

of the SoBi student council



DEAR QUIETSCHIES

Welcome to the University of Passau
and especially to the Faculty of Social and Educational Sciences!

This booklet is your go-to guide for Orientation Week and the beginning of your studies. It is designed to help you navigate the campus and address any initial questions you may have as you get started.

Created by the SoBi student council (Fachschaft/FS), we're not only there for you during Orientation Week, but throughout your entire degree programme.

We have office hours to support you with any concerns (check Instagram for office hours) and we've also compiled resources like past state examinations, module catalogues and information leaflets for every degree programme in the Faculty of Social and Educational Sciences.

Beyond academics, we organise a variety of activities and events to enrich your student experience, including blood drives, excursions, legendary parties and much more!

If you have any questions or need assistance during your studies, don't hesitate to reach out to us - whether by email or through social media. We're always here to help

We hope you enjoy leafing through this guide,

Simon, Viola and Hannah
for the FS SoBi

F A C H S C H A F T
So  **Bi**

Fachschaft SoBi


@fs.sobi auf Instagram

(0851) 509-2613

fachschaft-sobi@uni-passau.de

NK R 235

INHALT

3	DEAN PROF. DR. SAILER	22	PROGRAMME-SPECIFIC STUDENT ORGANISATIONS AND OTHERS
5	DEAN OF STUDIES PROF. DR. HIDALGO AND PROF. DR. URHAHNE	26	UNI-ABC
7	HOW IS THE UNIVERSITY ORGANISED AND WHERE DO I GO WITH WHICH QUESTIONS?	31	MENTAL HEALTH BY STUDENTS FOR STUDENTS
9	PROGRAMME COORDINATION	32	ABBREVIATIONS
11	HOPO - WHAT IS THIS?	33	LOWER BAVARIAN FOR BEGINNERS
13	THE FS-SOBI 	36	PASSAU BUCKET LIST
15	SOBI STUDENT COUNCIL EVENTS	38	IMPORTANT CONTACT POINTS
19	ORIENTATION WEEK PROGRAMME	40	IMPRINT

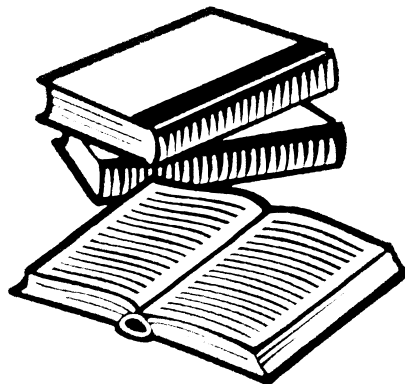
3 Dean Prof. Dr. Sailer

Dear Students,

On behalf of the entire Faculty of Social and Educational Sciences, I am delighted to welcome you to the University of Passau! It's an honour to have you join our academic community.

Starting a new degree programme is an an exciting moment in every student's life. You are embarking on a journey that will not only expand your intellectual horizons but also foster personal growth and self-discovery. This is a time to deepen your knowledge, build lifelong friendships, and develop skills that will shape your future.

Our faculty is committed to excellence and innovation, offering a wide range of programmes designed to allow you to pursue your passions and realise your full potential. With the support of our dedicated faculty members and access to our libraries, seminar rooms, and research facilities, you'll have everything you need to succeed on this journey.



You will encounter challenges during your studies, but I encourage you to see these as opportunities for growth and learning. Take advantage of this time to engage socially, build friendships, and expand your network. Your hard work and dedication will be well rewarded.

Remember, education is a lifelong journey, and your studies are just the beginning. We hope that along with acquiring knowledge, you will also develop the skills and confidence to make a meaningful impact on the world and contribute positively to society.

I wish you a successful and enriching experience at the University of Passau. Please do not hesitate to contact us if you have any questions or concerns. We are here to support you.

Prof. Dr. Maximilian Sailer,
Dean of the Faculty of Social and Educational Sciences



Kontakt:

Prof. Dr. M. Sailer

+49(0)851/509-2630

maximilian.sailer@uni-passau.de

Room number: PHIL 464

5 Dean of Studies Prof. Dr. Hidalgo

Dear students,

As Dean of Studies at the Faculty of Social and Educational Sciences, I am delighted that you have decided to study a degree programme at the University of Passau. In the coming months and years, I wish you good luck and success in your academic endeavors, the necessary patience and, above all, a myriad of opportunities to broaden your horizons, develop intellectually and personally, and make valuable contacts and friends.

Your studies are an important stage in your life and I would like to support you in the best possible way.

It is part of my job to ensure that you find an interesting and adequate range of courses at our faculty so that you can complete your studies within the standard study time and receive the best possible support from your lecturers. You are welcome to contact me if there are any difficulties or bottlenecks in this respect or if I can support you with any other problems. A fair evaluation of the courses you attend also gives you the opportunity to contribute to the continuous improvement of the educational experience at the University of Passau.

I wish all students an exciting and successful winter semester.

Prof. Dr. Oliver Hidalgo

Dean of Studies of the Faculty of Social and Educational Sciences

Contact:

Prof. Dr. Oliver Hidalgo

Room HK16 218

+49(0)851/509-2830

oliver.hidalgo@uni-passau.de



Dear Students,

As the second Dean of Studies at the Faculty of Social and Educational Sciences, it is my pleasure to welcome you to the University of Passau. You may be wondering why there is a second Dean of Studies. Is he something like the second goalkeeper who comes into play when the first one is injured? Not quite, because Prof. Hidalgo and I fulfil the same tasks, albeit with a different focus. So, in a sense, we share the goalkeeper position.

My main area of responsibility is the University's Teacher Education Programme, because the group of teacher education students, who will later become teachers in Bavaria, is by far the largest student group. I want to ensure that you can study at the University of Passau with as few problems as possible, that you have access to an attractive and sufficiently large range of courses, and that you can learn both the academic and practical teaching skills that will help you in your future profession. Please do not hesitate to contact me if you have any questions regarding examinations, acceptance for credit or improving the quality of teaching.

I wish you a good start to your studies and hope that they turn out the way you want them to.

Prof. Dr. Detlef Urhahne,
Dean of the Faculty of Social and Educational Sciences

Kontakt:

Prof. Dr. Detlef Uhrhahne
+49(0)851/509-2673
detlef.urhahne@uni-passau.de
Room number: PHIL 387



The university is quite big! 7

The University of Passau – in comparison to secondary school – is structured differently.

Level	University Governing Structure	Student Representation
Uni-level	Uni Leadership: President, Chancellor, Vice Presidents	AStA
Faculty-level	Dean, Vice Dean, Dean of Studies	Student Council



**We are your
voice in the
faculty!**

The University of Passau is divided into five faculties:

- Faculty of Law (Jura)
- Faculty of Business, Economics and Information Systems (WiWi)
- Faculty of Computer Science and Mathematics (FIM)
- Faculty of Humanities and Cultural Studies (GeKu)
- Faculty of Social and Educational Sciences (SoBi)



The faculties are divided into chairs, each offering different courses. Every faculty has specific degree programmes. At the SoBi Faculty, these are:

- Teaching degree (primary school, Mittelschule, Realschule, Gymnasium) (DE)
- B.A. Journalism and Strategic Communication, in short: JoKo (DE)
- B.A. and M.A. Governance and Public Policy - Staatswissenschaft, in short: StaWi (DE & EN)
- M.A. Communication in the digital society, in short: KoDi (DE)
- M.A. Development Studies (EN)
- M.A. Geography (DE)

8 Who helps with which questions?

Dear Quietschies,

Later in this guide you will find more contact persons/offices you can turn to for help solving problems. You can find a very general list of the most important resources here:

Questions pertaining to registration, re-registration, Campuscard	Student Secretariat
Questions about exam registration and exam administration	Exam Secretariat
Student advisory services, advising from the first semester onwards on studies, credits, etc.	Programme Coordination (next page)
Peer-to-peer counseling, informal advice on everything and, if necessary, referral to the right place	SoBi Student Council (or student councils of other faculties)

Dear students,

We would like to welcome you to the University of Passau! The programme coordinators from the Faculty of Social and Educational Sciences, the Faculty of Humanities and Cultural Studies and the Teacher Education Centre (ZLF) are delighted that you have chosen to pursue your degree in the City of Three Rivers and at one of the most beautiful universities in Germany.

Who are we and what services do we offer?

As the programme coordinators of the Faculty of Social and Educational Sciences, the Faculty of Humanities and Cultural Studies and the Teacher Education Centre, we serve as vital communication links between prospective students, current students, faculty and university administration. We are dedicated to providing comprehensive support and guidance throughout your academic journey. For students in the teaching degree programmes the ZLF programme coordinators are your go-to resource.

For all other B.A. and M.A. programmes, the programme coordinators from the Faculty of Social and Educational Sciences and the Faculty of Humanities and Cultural Studies are here to assist you.

We support you with a wide range of topics relating to your studies, including

- Study counselling (study planning, problems with the course of studies, etc.)
- Structured support for the preparation and follow-up of stays abroad (in particular support with learning agreements)
- Preparation and implementation of the recognition of examination results
- Questions about changing subject or degree programme and double degree courses
- Recognition of internships and project work
- Preparation of BAföG reports

Feel free to reach out with any other questions you may have. We hope you enjoy Orientation Week and wish you a successful start to your studies at the University of Passau!

With best regards,

Your degree programme coordinators for the
Faculty of Social and Educational Sciences:

Dr. Christian Dölle

**Contact SoBi:**

christian.doelle@uni-passau.de
NK R 227 b

Your Teaching Degree Programme Coordinators at
the ZLF:

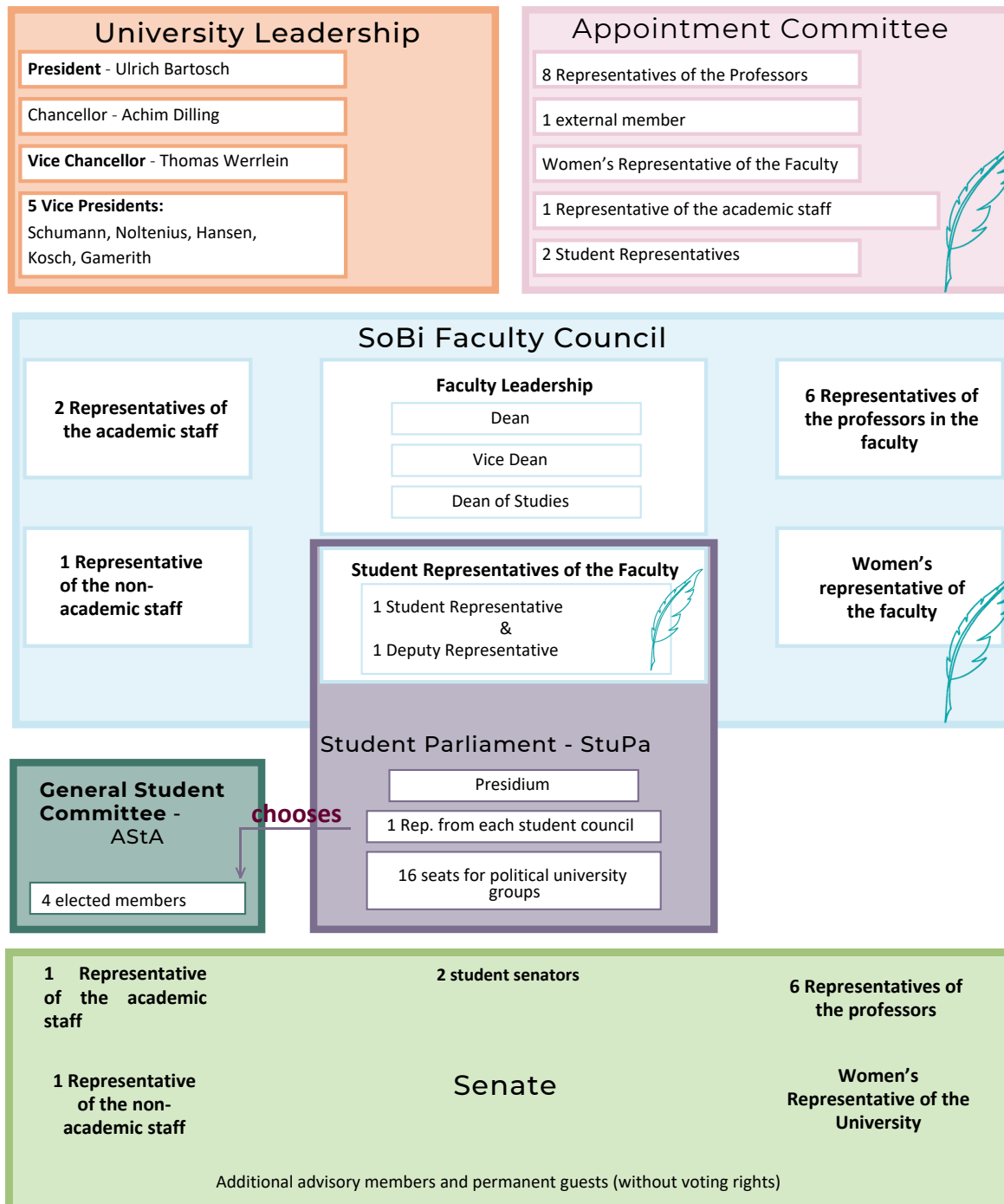
Isabella Karasek,
Hazal Dogudan,
Matthias Fuchs

**Contact:**

isabella.karasek@uni-passau.de
hazal.dogudan@uni-passau.de
matthias.fuchs@uni-passau.de
IG 203

University Governance Structure

This illustration shows the organisation of the governing structures of the University of Passau. The boxes marked with the SoBi feather represent faculty-level entities, those without indicate university level or cross-faculty structures.



We have two student representatives on the **appointment committees** responsible for selecting new professors for the SoBi faculty. This gives us an important role in shaping the faculty—and, by extension, your degree programme.

In the **Faculty Council**, where all key faculty-level decisions are made, we represent you and work hard to ensure your interests are heard and addressed.

We also sit in the **ZLF** in representation of our teaching degree students.

We also have a supra-political seat in the **student parliament**.

The **Senate** operates at university-wide level, which is why you are not represented here by the student council, but by the senators (from the ASStA).

12 The AStA

The AStA Council is your point of contact for any issues related to your studies!

As the executive body of the student representatives, we take suggestions from the student parliament (StuPa) and turn them into projects aimed at improving your everyday student life. We also play a key role in liaising with university leadership and advocating for your interests externally, whether with the city or the Bavarian Ministry of Science and the Arts.

Our team consists of two student senators and other members elected by the StuPa. In addition to committee work, we also organise events such as our charity Christmas market or lecture series and such.

You can find regular updates on our activities by visiting our social media channels and website.

During the semester, we offer regular office hours where you can contact us with your concerns. You can find our office in the cafeteria building (M164) or contact us at any time by email, Facebook or Instagram to schedule an appointment. Of course, you are welcome to speak to us directly – we'll do our best to make your time in Passau unforgettable!

Contact AStA

(0851) 509-1972

asta@uni-passau.de

Instagram: @asta_passau

Office M 164



Hallo dear Quietschies!

We are Pia and Marlies, this year's speakers of the SoBi student council and we are very happy to welcome you to the new semester at the Faculty of Social and Educational Sciences.

We represent you on key university policy committees, such as the Faculty Council.

In this year's university elections, we were elected 1st and 2nd on the SoBi list. Speakers are elected annually, and it's a role we're honored to hold.

We'd be delighted to see new faces join the SoBi student council! Feel free to follow us on Instagram (@fs.sobi) and come to the open student council meeting on 21 October 2024 to get a feel for what we do.

We wish you a successful start to your studies,
Pia and Marlies



14 The SoBi student council

Our Team



As a student council, we support you throughout the semester with a wide range of services. This starts with our weekly consultation hours, where you can ask any questions about studying or university life. We also offer a collection of state examination papers and can even lend you picnic blankets and charging cables if needed.

Beyond Orientation Week events, we regularly organize events during the semester, such as the legendary “Blondies (German: Tussi) meets Nerd” Party (TmN), the Advent readings and our blood drive with the Red Cross. Our Studimental project, which was created during Covid to support students during the online semesters, provides you with mental health tips during your studies.

Orientation Week itself is packed with cool events and activities. You can join us for sports, explore the city and campus, and take part in a variety of fun activities. We look forward to seeing you and hope you have a fantastic start to your studies at the University of Passau.



Instagram



Website

The student council depends on your input 15

Do you enjoy socialising with others?

Would you like to help students?

Are you interested in the university's decision-making processes & structures?

Are you passionate about having a real say at the university and eager to drive change?

Are you helpful and willing to take on responsibility?

Would you like to connect with students from other degree programmes?

If you've answered yes to at least one of the above questions, then join us - with us you're in the right place!

There's something for everyone here: whether it's planning events, managing finances, advising students during consultation hours, advocating for changes in the degree programmes, running our social media channels or website, designing the next Quietschie Guide, and much more.

The main goal of being part of the student council is to help shape university life - especially at our faculty. You can make a difference in many ways, be through appointment committees, participation in working groups or engaging in committee work.

In the student council, you have the opportunity to contribute and improve your teamwork, conflict management, organisational and communication skills. All of this will not only benefit you in your future career, but also now - during your studies.

But don't worry, there's plenty of fun to be had within our large student council family. You can look forward to making lots of new friends and enjoy a diverse range of activities!

Info Event and open meeting

Monday, 05.05.2025

7:30 PM

Room: NK 205

16 Semester Opening

The perfect start for your semester



Hello everyone!

join us to play flunky & spikeball and have a pizza from gustavo and gusto along with drinks. It's on us, you just need to bring good cheer and friends if you like.

when? April 26, 2pm

where? Innwiese (Inn lawn)

The perfect start to the semester



Celebrate the start of term with us!

Where: Nikolakloster Courtyard, Innstraße 40, 94032 Passau

When: 25.04.2025, 6:30 PM to 11:30 PM

How: Register via StudIP Events (Nr. 250425) and don't forget to assign yourself to a group!

Wanna party a little longer?

Join us at the afterparty!

Where: Zauberberg Passau, Franz-Stockbauer-Weg 1, 94032 Passau

When: 25.04.2024, from 9 PM

Price: 5 Euro (drinks voucher included)

Please bring your ID and a good mood!

Your creativity knows no bounds

Once or twice a year we organise a Colour Night. We'll be meeting in a café for a fun painting session together. Everything you need for your artwork will be provided by us. In return, we only ask for a small contribution. Registration takes place via Stud.IP.

Stay tuned for more details on Instagram. If you'd like to help organise or join us in painting, let us know?



*Come
by and
join in!*

A teal-colored feather graphic, oriented vertically, with its base at the bottom and its tip pointing upwards. It has a simple, stylized outline.

Dear Quietschies!

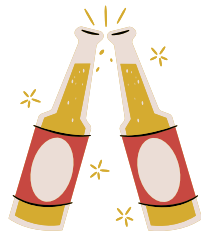
We've put together a colourful programme for Orientation Week (O-Week). Normally, O-Week is the week before lectures start, but since this year's Easter falls on, your first week of lectures is also your O-Week. If you don't make friends right away during the shortened O-Week, don't worry! You can quickly find a way to connect in university groups or, for example, the student committee! Feel free to stop by our sports and fun events. You can register for the events using the respective StudIP number, which you can find in the O-week plan. You can also find the exact times there. We look forward to the O-week with you!

Pub-Quiz



Pub Crawl thru Passau

Hike up the Veste



Flunkyball & Beer Pong

Bouldern in Steinbock



20 o-Week Programme: The first days

Welcome

The SoBI Welcome event!

The SoBi student committee's welcome event will take place on Tuesday. We look forward to introducing you to some important people at the university and providing you with lots of other tips and information for your studies.

Speed Meeting & Bingo

Do you feel like meeting new people? Then come to our informal speed meeting and find new friends!

Bouldner

Climb to lofty heights and have fun! We're going bouldering in Passau together at Steinbock! You can rent shoes there, take buses 1, 2, 8 and 9 to get up there. Just search for it in the DB Navigator! We'll meet in front of the hall.

Pub Quiz

Put your knowledge to the test and have a fun time with friends. Everyone gets their fill at the pub quiz.

Master Kaffeeklatsch (coffee gossip)

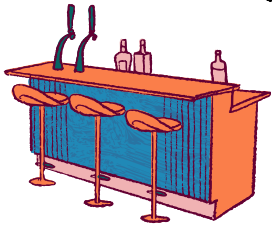
Would you like to connect with some Master's students amidst the sea of Bachelor's students? Are you pursuing your Masters at the SoBi or GeKu or another Faculty? Are you in the mood for a cosy coffee, we look forward to seeing you - at the Master Kaffeeklatsch!

Campus tours

During the orientation week, you'll get to see our campus with all its nooks and crannies. We'll also give you tips on good spots for studying or leisure activities. Plus, we'll share lots of fun facts! (We usually need about 30-60 minutes, depending on how many questions you ask.) A tour for people with accessibility needs is possible – just talk to us!

Hike up the Veste

Want to see Passau from above? It's not too challenging and it's done in a flash – come with us to the Veste and see if you can find your apartment from above too :)



Timetable counselling

- M.A. via Zoom
- Teaching Degree Students -> StuVeLa
- You want to do it yourself?
 - Read up on the module catalogue and the FStuPO (degree-specific examination regulations)! You can find everything online on the University of Passau website. For many degree programmes, there are also sample curricula online or in the infosheet.



Help with any further questions:

You can always come to SoBi Student Council with any questions.

We are responsible for all teaching degree programmes, JoKo, BA and MA StaWi, MA KoDi, MA DS, and MA Geo.



GoverNET is a student society and an association for political education, as well as representing the degree programme 'Governance & Public Policy – Staatswissenschaften'. We focus on promoting political will, cultural and interpersonal exchange of ideas, and inspiring young people to take an interest in political events. The association also represents the degree programme in public policy and is therefore the point of contact for all questions regarding the degree programme.

The association is committed to promoting political education not only on campus, but also outside the university sphere. The flagship events here are the PPT (Passau Politics Days), which attract hundreds of interested parties every year and have already brought many well-known politicians to Passau, such as Gregor Gysi, Andreas Scheuer, Elmar Brok, Katharina Schulze and many more. Our two school projects – Building Blocks of Democracy (secondary schools) and the primary school project – are also central pillars of the association. In our numerous working groups, such as the event working group, the alumni working group, the Politaxi (podcast) and many more, all students with an interest in politics are welcome. We build bridges between students and our alumni and organise political and social projects.

NO MATTER WHAT YOU STUDY: Contribute your ideas and skills to one of our numerous working groups and work with us on exciting projects!

23 Study programme-specific university groups

PaNGeo - We are a colourful university group made up of students from a wide range of degree programmes such as Master's Geography, Teaching Degrees, KuWi or European Studies - what unites us all is our connection to geography. Our aim is to connect you and represent your interests to faculty and staff. We meet every two-weeks on Wednesdays either in our office or in various locations to exchange ideas, have a drink or two or even to test our knowledge in the geo-quiz. Once a semester we organise a PaNGeo chalet weekend and a Run & Dine. Our meetings are informal and in most cases you don't have to register, you can just show up spontaneously! As a university group, we cater the fortnightly GeoComPass events, where our members are asked to prepare small sweet delicacies and, of course, listen to the exciting lectures free of charge in return.



JoKonnnect e.V. is a student-run group for those in the Journalism and Strategic Communication degree programme. Divided into various departments, JoKonnnect addresses a wide range of issues impacting JoKo students. Among its initiatives, the social media section manages JoKo's online presence, while the young talent section offers guidance to new JoKos, especially at the beginning of their studies. In addition, the events section plans and organises summer and Christmas parties for the JoKo community. JoKonnnect also serves as a point of contact for any questions or concerns JoKo students may have, providing support for all matters relating to the degree programme.

Study programme-specific university groups 24



StuVeLa - The Student Council for Teaching Degree students is a group of committed students.

We represent the interests of teaching degree students in the ZLF.

We organise the orientation week, the teaching degree student party and a mulled wine stand. We organise events to provide information on topics such as insurance, exam registration and exams.

To stay up to date, follow us on Instagram: @stuvela

We are happy to advise you on all matters relating to your studies via email (stuvela@uni-passau.de) or in our open consultation hours. Come to our meetings without obligation: During the lecture period on Wednesdays at 8 pm in the DiLab (NK 211)!

BLLV - We are a group of teaching degree students committed to making a difference during our studies. What do we do? We host regular gatherings, organize an Orientation Week specifically for teaching degree students, and plan joint excursions, events, and workshops. We also facilitate work placements abroad, information evenings, team-building weekends, and meetings with fellow students from across Bavaria. Additionally, we engage in exchanges with trainee teachers and educators, discuss education policy, and much more!



University group (HSG) afternoon

On Wednesday, 30 April 2025, the information afternoon for university groups will take place at Mensavorplatz (Cafeteria forecourt) from 2:00 PM to 4:00 PM. During this event, over 70 different student groups will showcase themselves and their projects for the semester, highlight the vibrant activities available on the Passau campus beyond academics. Whether you're interested in culture, politics, sport, or simply pens and stickers – there's sure to be something for everyone!



Wednesday, 30.04.2025



2:00 PM - 4:00 PM



Cafeteria (Mensa) forecourt

Akademisches Auslandsamt (Int'l Office)

The International Office (AAA) and the international tutors are available to help and advise you if you would like to spend a semester or do an internship abroad. You can find them in the administration building at Innstraße 41.

**Allgemeine Studien- und Prüfungsordnung
(General study and examination regulations
(AStuPO)/Subject-specific study and examination
regulations (FStuPO))**

The "bible" for your coming years at university. It is definitely worth reading the FStuPO for your degree programme: It tells you which exams you have to take, how to retake exams and which deadlines apply. For teachers, the whole thing means "Lehramtsprüfungsordnung (LPO)", which can be found on the website of the Bavarian Ministry of Education and Cultural Affairs. In general, however, the AStuPO takes precedence over the FStuPOs - so be sure to keep these in mind.

Bibliothek (Library)

The university has several libraries, each designated for specific subject areas. Access and usage guidelines have changed over the past semesters, and some rules are still in place. You can always find the latest information on the library's website.

Bib-Lounge (Library Lounge)

The central library features a cozy lounge where you can read a diverse selection of newspapers from Germany and abroad. It's an inviting space to browse through books and is perfect for a quick coffee break while studying in the library.

Cafete (Mini Cafeteria)

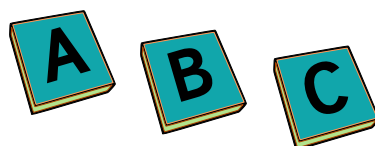
Our university has four cafeterias: the Mensa cafete, the Kulturcafete (NK), the WiWi cafete, and the cafete located in front of the Audimax. In all cafetes, you can pay contactless or with your CampusCard, just like in the Main Cafeteria (Mensa).

CampusCard

The CampusCard combines the student ID card, the MensaCard, the printer card for the campus printers and also functions as a library card (UB number on the back). Money is topped up at the various charging stations. If you ever lose your card, the service office on the ground floor of the Mensa building can help.

Copyshop (copy centre)

The university's copy centre is located in the WiWi building and there are several copy shops near the university (e.g. near the Nikolakloster, opposite the WiWi or opposite the Juridicum) where you can find copying facilities as well as writing materials and have your term papers bound.



C.T.

...stands for cum tempore, meaning that an event starts fifteen minutes later than indicated. See also S.T.

Fachschaft SoBi (SoBi student council)

That's us, with the black jumpers and the turquoise SoBi feather on them! We'll help you through the O-week, but we'll also do a few other things - just drop by. You can find us during our office hours in NK 235, on the website or on social media.

Fakultät (Faculty)

The university is divided into five faculties: the Faculty of Social and Educational Sciences (SoBi), the Faculty of Humanities and Cultural Studies, the Faculty of Business, Economics and Information Systems, the Faculty of Law and the Faculty of Computer Science and Mathematics. There used to be the Faculty of Catholic Theology, which has now been transformed into the Department of Catholic Theology.

Gmoa

Our student pub in the NK is always open for after-lecture beers and barbecues in summer. Enjoy a cold beer, a wine spritzer or a warming mulled wine in winter. Cheers!

Hochschulgruppen/HSG (University groups)

Feeling bored at home on the couch? Explore one of the many university groups! Most of them will be hosting information evenings or inviting you to their weekly meetings in the coming weeks. Whether you're interested in theater, music, politics, or social issues—seize the day and get involved!

Innwiese (Inn lawn)

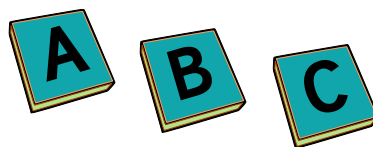
This is the large lawn between the Philosophicum and the Inn footbridge lecture hall. In the summer, the Innwiese is the ultimate meeting place!

Kopieren und Drucken (Copying and printing)

The CampusCard also serves as your card for copying and printing. Please note that copying credit must be added separately from cafeteria credit, and this can only be done using cash. Special top-up machines (charging stations) are located next to the photocopiers. All photocopiers can also be used for printing.

Ladekabel (Charging cable)

Battery dead? Not with us! Whether Apple or Android, we have new juice for everyone! For a deposit (driving licence, ID, etc.) you can borrow a charging cable from our office for 24 hours.



Ladestation (Charging station)

There are various charging stations for your CampusCard where you can add money for meals, located in front of the respective cafeterias and in the main cafeteria. Please note - the copying account is separate! You won't get far with the money topped up for food and drink. If you want to make copies, you need to top up your account at the designated charging stations, e.g. in the Central Library, WiWi and Nikolakloster.

Mensa (Main Cafeteria)

The main cafeteria is located diagonally across from the central library. The weekly menu is available online. There are several Mensa apps available. You can pay in the Mensa with your CampusCard or, more recently, contactless; cash is no longer accepted.

Module catalogue

of the modules that make up your degree programme. Good for keeping track of the courses you have to attend during your degree programme. Module catalogues for each degree programme can be found on the website of the Examinations Office

Nachteilsausgleich (Disadvantage Compensation)

you can apply for this if you have ADHD or something similar that affects you in exams or in general university assessments. Find out more from Ms Ulrike Bunge!

Office-Anwendungen (MS Office)

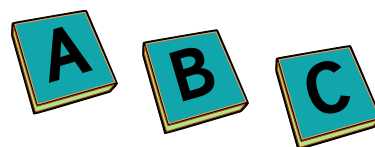
Simply write term papers on your computer. You can obtain a free Office licence via the ZIM website

Passauer Suchportal (Passau search portal)

The "Passau Search Portal" allows users to search for literature not only in the holdings of the two local libraries, but also simultaneously in the Bavarian Verbundkatalog and in an extensive article database. The listings are displayed under the three tabs "Catalogue of Passau University Library/ SB Passau", "Verbundkatalog Bavaria/Berlin-Brandenburg" and "Articles & more".

Gründen @ PATEC

We are "Passau - The Entrepreneurial Campus" (PATEC): Are you curious about entrepreneurship? Would you like to develop an idea, enhance your qualifications, or do you already have a business idea that you want to bring to life? No matter where you are on your startup journey, you're sure to find the right program for you among our wide range of offerings. Students and doctoral candidates will receive support from the brainstorming stage all the way to founding a startup, with new initiatives focused on entrepreneurship. Contact us at gruenden@uni-passau.de or visit our website for more information.



PC-Pool und password

There are several PC pools at the university that you can use. For example, in the basement of the NK, in the WiWi, Computer Science or Law buildings. To log in, you will need your ZIM ID (e.g. mustermann21) and password. Both were sent to you with your letter of admission!!

Pforte (Gate)

If you ever find or lose something, the entry gate in every building is your first point of contact.

Quietschie

That's you! And by the way, the word is in no way meant in a bad way, let alone an insult. It's even something special: at other universities, you would uncreatively only be called "Ersties" ("Firsties" in English) is the name.

Rückmeldung (Re-registration)

The re-registration period is a two-week period shortly before the end of a semester. During this time, you must transfer the student and semester ticket fee for the coming semester.

S.T.

...is called 'sine tempore' and means that the event begins exactly at the time indicated. See also C.T.

Schliessfächer (Lockers for the Library)

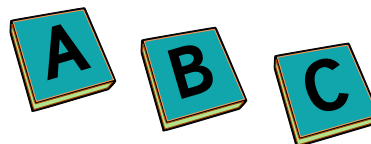
There are various ways to store your belongings safely. The lockers are usually located in front of the libraries and can be used with the CampusCard or in some locations with small change. The lockers having their own lock are intended for students who are in their thesis-writing phase. All information can be found on the university library website.

Sportzentrum (Sports center)

The sports centre has an extensive range of sports on offer for you. You can find out more on the website. You can start registering for courses as of 07.10.2024

Sprachenzentrum (Language center)

German, English, Spanish or would you prefer Chinese? In addition to a wide range of language courses, there is also a video library (NK 315) where you can borrow DVDs in various languages free of charge.



Stud.IP / CampusPortal

Two essential websites that will accompany you throughout your entire degree programme. On Stud.IP you can find all courses (course catalogue) and register for them. You can also manage your CampusCard and receive messages from the administration. On the CampusPortal you will receive your enrolment and BAFöG certificates, can change your contact details and register for exams.

STWNO

The Studentenwerk Niederbayern/Oberpfalz offers its services to students in Cham, Deggendorf, Landshut, Passau, Pfarrkirchen, Regensburg and Straubing. For example, the STWNO takes care of the food and drinks in the cafeterias, builds and manages student accommodation and much more.

Vorlesungsverzeichnis (Course catalogue)

You can find the current version of the course catalogue on the websites of the respective faculties or in Stud.IP. All courses are listed here.

WLAN/WiFi

In most buildings you have a wireless connection to the university's open campus network. To log in, you need to install the eduroam certificate (for more information, visit: zim.uni-passau.de).

In addition there are there is "BayernWLAN"

Elections

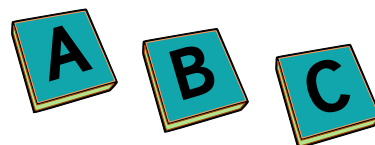
University elections are held every year during the summer semester, allowing you to elect student representatives, student senators, and members of the student parliament. Please take this opportunity to support these groups and help shape the direction of our university!

ZIM

„Centre for Information Technology and Media Management". This is the contact point for IT and media issues. They manage Stud.IP/CampusPortal and the university website. If you can't access the WiFi or forgot your password, they can help.

ZKK

The "Future: Career and Competencies" office offers a range of courses where you can learn more than just dry theory! From rhetoric and intercultural communication to Photoshop courses, there is something for everyone. The ZKK also serves as a valuable link to the job market: whether it's before an internship, learning business etiquette or help with your job search, you're in good hands here. You can find the entire programme on Stud.IP or on the ZKK website.



3 | Mental Health



Your well-being is important to us! That's why we launched the "Studimental - it's okay not to be okay" initiative. With sports, exchange and meditation programmes, we help you to get through everyday university life and the exam phases with less stress. We introduce you to counselling centres where you can seek help and show you tips and tricks to make your everyday life easier. We also organise exciting talks on the topic of mental health. You can find more information on the Instagram channels of the SoBi and GeKu student councils. You can also find contacts for mental health issues at the end of this guide under "Important contacts".



Have you started your first semester in Passau and feel alone and overwhelmed? Does the thought of the exam phase already make you panic? You don't know who to turn to? Just give us a call! We'll listen to you - no matter what!

We, the Nightline Passau, are a night-time helpline for Students from students. Both you and our listeners remain completely anonymous and the content of the conversation is treated in strict confidence and without judgement. You can reach us on the following telephone number: 0851 509 5000 - currently every Monday, Thursday and Sunday from 9 pm to 1 am. Visit Instagram (@nightlinepassau) to see when the service is offered in English.

Are you interested in getting involved with us? Have a look on Instagram!

Kursbezeichnungen

V/VL	Lecture
SE	Seminar
PS	Proseminar
HS	Advanced seminar
OS	Advanced seminar
WÜ	Scientific exercise
GK	Basic course
TU	Tutorial
AK	Working group
AR	Working course

Cultural spaces for cultural/Buissnes Studies

Anglo	Anglo-American Studies
Franko	Franco-Romance Studies
Ibero	Ibero-Romance Studies
OME	East-Central Europe
SOA	South-East Asia

Other abbreviations

VA	Events
HSG	University Group
HoPo	University Politics
StuPa	Student Parliament
UB	Uni-Library

Study programmes and minor subjects

B.A.	Bachelor of (He)Arts
B.Ed.	Bachelor of Education
M.A.	Master of (He)Arts
M.Ed.	Master of Education
LA	Teaching degree (Grund-, Mittel-, oder Gymnasium)
Caritas	Caritas sciences and value-orientated management
DS	Development Studies
ES	European Studies
ESM	European Studies Major
EWS	Educational Sciences
Geo	Geography: Culture, environment and tourism
HiWi	Historical Sciences
JoKo	Journalism and Strategic Communication
KoDi	Communication in the Digital Society
KuWi	Kulturwirtschaft/International Cultural and Business Studies
MuK	Media and Communication
SpuTe	Linguistics and Text Sciences
StaWi	Political Science/Governance and Public Policy
TuK	Text and cultural semiotics
PoWi	Political science

33 (Lower) Bavarian for beginners

A Hoibe

Half a litre of beer; the daily bread of a Bavarian and student

A Maß (mit kurzem a)

one litre of beer - the accent should not be confused with the word Maß (with a long a)

Auffe

up

Back ma's o

We should decide together to start this project immediately.

Bassd scho

Satisfactory praise from a Bavarian

Bledschmatzer

a person who only talks rubbish

Depp

a not very sociable person

Do varreck

I have to express my surprise

Duit

the annual Passauer 'Dult' (small Oktoberfest)

Fralle

of course, of course, of course

Gloife

Paraphrase for a boorish person

Glump

The quality level of the goods is extremely unsatisfactory.

Gscheidhaferl

Expression for a person who has eaten wisdom with a spoon

Gschpusi

Romance, if the "obandln" was successful. See Obandl

Gwies ned

I can rule that out with a probability bordering on certainty

Hau bloß ab

If you do not leave my office immediately, I will be prone to violent outbursts

(Lower) Bavarian for beginners 34

Hammas?

an enquiry as to whether you are now finished

Ja Mei

At the moment, I feel completely unable to bring about any improvement in the current situation

Jetzt foid glei da Watschnbam um

the last warning from a Bavarian before he gets violent

Jetzt schäbads glei

The last warning before a verbal thunderstorm

Kim glei

I am currently very busy, but will try to deal with your request afterwards

Lebakassemme

beside beer, the main source of nourishment for a Bavarian. A ham sandwich, somewhat

A Matz

a very clever person

Merce Dia

Expression deep gratitude

Noagerl

the last sip of a beer, the drinking of which should be avoided at all costs

Obandln

flirting

Oba vom Gas

polite remark that you have not only exceeded the speed limit or are going too fast, too far

Obe

down

Omeiomei

A verbal shake of the head

Oida

Expression to address the other person

Allerwei

always

Preiss

Expression for anyone born outside of the promised land of Bavaria, or who does not speak Bavarian (long historical anecdote)

35(Lower) Bavarian for beginners

Saubä

To express a certain degree of recognition

Schleich di

Friendly request to leave the person in question alone as quickly as possible

Schmarrn

Nonsense or rubbish

Spezl

In contrast to the often confused "Spezi", this expression means a good friend.

Wennst moansd

"I am always prepared to compromise in the interests of peaceful coexistence"

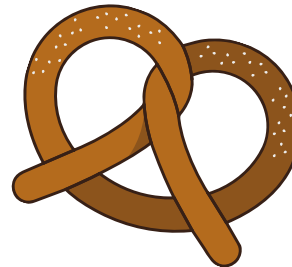
Zipfeklatscher

Friendly paraphrase of the word "idiot" or a kindly meant greeting for a Spezl

Zwickl

2€ coin,

Not to be confused with the Zwickerlbier



Passauer Bucketlist

- ☐ Picnic at the River Confluence
- ☐ Get lose in the NK Building
- ☐ Learn a new language
- ☐ Barbecue on the 'Innwiese'/Inn lawn
- ☐ Retake an exam
- ☐ Go swimming in the PEB
- ☐ Go ice skating in the ice arena
- ☐ Go to a boat party
- ☐ Take part in the 'Innstadt pub crawl' (Kneipentpour)
- ☐ Watching lizards on the WiWi slope
- ☐ Go to the cathedral
- ☐ Throw/go to a party
- ☐ Experience a flood
- ☐ Hike up the Veste and enjoy the view above the city
- ☐ Take a boat trip on the Danube
- ☐ Cycle to the cider farmer
- ☐ visit the 'Dult' and dance on tables all night long
- ☐ Watch a game of the Passau Black Hawks (Ice hockey team)
- ☐ Have a beer in the Gmoa after lectures

Passauer Bucketlist

- ☐ take part in the pub quiz at the Shamrock
- ☐ Take a trip to the Bavarian Forest
- ☐ spend an Aperol Tuesday at Café Kowalski
- ☐ Vote in the university elections
- ☐ look for an open kebab stand at night after partying
- ☐ Take a university sports course
- ☐ get your hands on the first cinnamon buns on Saturdays at 3 pm at ProLi
- ☐ swim in the Ilz reservoir
- ☐ take the thousandth photo from the Inn promenade
- ☐ Meet acquaintances more or less voluntarily in the city
- ☐ walk the Inn round over the dam
- ☐ Go to the Christmas market and drink mulled wine or children's punch
- ☐ the evening on the Inn beach
- ☐ Sing karaoke in the Shamrock
- and most important thing of all:
- ☐ Find friends for life!



Studium

- Study counselling (choice of degree programme, course of study, changing degree programme)
- Student secretariat (choice of degree programme, course of study, change of degree programme, drop-out advice/application office, CampusCard, re-registration/semester fees, semester off, exmatriculation)
- Study coordination (comprehensive counselling and support during studies)
- Subject-specific study counselling (higher semesters, recognition of study and examination achievements)
- Examination office (examination matters, examination registration, module catalogue, study and examination regulations)
- Fachschaften (student council; elected student representatives: tips and advice)

Everything that comes up

- Infopoint in the administration building
- SoBi student council in NK235

Technic

- ZIM - Centre for Information Technology and Media Management (course catalogue, StudIP, ILIAS, course registration, user identification, ZIM, WiFi)

Foreign language training

- Language Centre
- Wolfgang Killer

Study abroad/international students

- Akademisches Auslandsamt/ International Office

Student financing

- Studierendenwerk (BAföG, student halls of residence, social counselling)
- Scholarship office

39 Important Contacs

Practical experience and qualifications

- ZKK - Future: Career and Competences (internships, scholarships for internships abroad, seminars on key skills, job application preparation, IT courses)

University sport

- Sports center

Gesundheit

- Psychological and psychotherapeutic counselling centre
- Counselling at the Studentenwerk
- Threat management (external and self-threats, discrimination)
- Counselling for students with disabilities and chronic illnesses:
Dr. Ulrike Bunge
- Health during your studies

Familie und Studium


- Family service
(pregnancy, students with child(ren), childcare)
- Diversity and Equal Opportunities Office
(pregnancy, students with child(ren), sexual harassment)

Church counselling, pastoral care

- protestant student pastor
- catholic student pastor

Copying, printing

- Kopierzentrum Passau

 **Insider Tip**
llias course: 'Healthy and Fit Studying' = "Gesund und Fit studieren" at the Sports Centre: you will find jogging routes in Passau, recipes, yoga, workout videos and much more!

Imprint

Orientation Week Guide of the Faculty of Social and Educational Sciences

4. Edition Summer Semester 2025.

Layout: Hannah Gansen

Redaktion: Simon Hofmann, Viola Hinrichs, Hannah Gansen

Kontakt: gansen02@ads.uni-passau.de

The contents of the guide are statements of the respective authors and the student committee of the Faculty of Social and Educational Sciences and the University of Passau. No guarantee can be given for the completeness and correctness of the contents.

Fachschaft Sozial- und Bildungswissenschaften

Innstrasse 40,
Zimmer 235 (Nikolakloster)
94032 Passau



